

RESOLUTION NO. CSD 2026-____

A RESOLUTION OF THE BOARD FOR THE MORENO VALLEY COMMUNITY SERVICES DISTRICT OF THE CITY OF MORENO VALLEY, CALIFORNIA, ORDERING THE ANNEXATION OF TERRITORY TO MORENO VALLEY COMMUNITY SERVICES DISTRICT COMMUNITY FACILITIES DISTRICT NO. 2021-01 (PARKS MAINTENANCE) AND APPROVING AN AMENDED MAP FOR SAID DISTRICT

WHEREAS, by its Resolution No. CSD 2022-23, Board established the Moreno Valley Community Services District Community Facilities District No. 2021-01 (Parks Maintenance) (the “CFD”), pursuant to the Mello-Roos Community Facilities Act of 1982 (Government Code Section 53311 *et seq.*) (the “Act”); and

WHEREAS, by its Ordinance No. CSD 55, the Board authorized an annual special tax to be levied against all non-exempt parcels of real property within the CFD (the “Special Tax”) to fund parks maintenance services; and

WHEREAS, in order to permit landowners to efficiently annex developing parcels to the CFD, the Board, by its Ordinance No. CSD 56 designated the entire territory of the City of Moreno Valley as a future annexation area for the CFD; and

WHEREAS, the landowner of the parcels listed on Exhibit A to this Resolution, which is attached hereto and incorporated herein by reference, has submitted to the District a petition requesting and approving annexation of the listed parcels (the “Annexation Parcels”) to the CFD; and

WHEREAS, the Annexation Parcels are comprised of the territory shown on the boundary maps (the “Boundary Maps”) entitled “Amendment Numbers 302, 325, 331, 332, 334, and 336 to Boundaries of Community Facilities District No. 2021-01 (Parks Maintenance), Moreno Valley Community Services District, City of Moreno Valley, County of Riverside, California” which is included as Exhibit B to this Resolution, and incorporated herein by this reference; and

WHEREAS, the Board desires to annex the Annexation Parcels to the CFD.

NOW, THEREFORE, THE BOARD FOR THE MORENO VALLEY COMMUNITY SERVICES DISTRICT OF THE CITY OF MORENO VALLEY, CALIFORNIA, DOES HEREBY RESOLVE AS FOLLOWS:

1. Recitals. The above recitals are all true and correct and are herein incorporated.
2. Annexation Approved. The Annexation Parcels are hereby added to and part of the CFD with full legal effect and are subject to the Special Tax.
3. Description of Services. The following is a general description of the services (the “Services”) provided in the CFD:

Maintaining, lighting, and operating parks and park improvements that are owned and operated by the CSD, to the extent such services are in addition to services already provided at the time CFD No. 2021-01 was created and do not supplant existing services.

Fundable services include (i) planting, replanting, mowing, trimming, irrigation and fertilization of grass, trees, shrubs, and other plants and vegetation, (ii) the operation, maintenance, repair, and replacement of irrigation systems and lighting systems, and (iii) the operation maintenance, repair and replacement of any real property or improvements with a useful life of more than five years.

Fundable costs include, but are not limited to: (i) contracted costs for such services, (ii) salaries and benefits of staff, including park rangers, devoted to such services, (iii) expenses related to equipment, apparatus, and supplies related to these services, (iv) administrative and overhead costs, including staff time, associated with providing such services, and (v) lifecycle costs associated with the repair and replacement of facilities and improvements.

4. Amended Boundary Map. The Boundary Maps attached hereto as Exhibit B are hereby approved. These maps amend, and do not supersede, the existing maps of the CFD. The Board directs that said maps be filed with the Riverside County Recorder pursuant to Section 3113 of the Streets and Highways Code.

5. Notice of Special Tax Lien. The Board directs that an amended notice of special tax lien be recorded pursuant to Section 3117.5 of the Streets and Highways Code with respect to the Annexation Parcels associated with the Boundary Maps.

6. This Resolution shall be effective immediately upon adoption.

7. The Secretary shall certify to the adoption of this Resolution, and shall maintain it on file as a public record this Resolution.

8. Severability. The Board declares that, should any provision, section, paragraph, sentence or word of this Resolution be rendered or declared invalid by any final court action in a court of competent jurisdiction or by reason of any preemptive legislation, the remaining provisions, sections, paragraphs, sentences or words of this Resolution as hereby adopted shall remain in full force and effect.

APPROVED AND ADOPTED this 21ST day of April 2026.

Mayor of the City of Moreno Valley,
acting in the capacity as President of the
Board for the Moreno Valley Community
Services District

ATTEST:

City Clerk of the City of Moreno Valley,
acting in the capacity of Secretary of
the Moreno Valley Community
Services District

APPROVED AS TO FORM:

City Attorney of the City of Moreno Valley,
acting in the capacity of General Counsel
of the Moreno Valley Community Services District

RESOLUTION JURAT

I, M. Patricia Rodriguez, Secretary of the Moreno Valley Community Services District, Moreno Valley, California do hereby certify that Resolution No. CSD 2026-____ was duly and regularly adopted by the Board of Directors for the Moreno Valley Community Services District at a regular meeting held on the 21st day of April 2026, by the following vote:

AYES:

NOES:

ABSENT:

ABSTAIN:

(Boardmembers, Vice-President and President)

SECRETARY

(SEAL)

EXHIBIT A

List of Annexation Parcels			
Boundary Map Amendment No.	Assessor's Parcel Numbers	FY 2025/26 Maximum Special Tax Rate¹	
302	482-322-009	Single-Family	\$369.57/Unit
325	484-153-008	Single-Family	\$369.57/Unit
331	481-033-005	Single-Family	\$369.57/Unit
332	479-413-012	Single-Family	\$369.57/Unit
334	256-200-002 256-200-003 256-200-004	Multi-Family	\$369.57/Unit
336	482-343-016	Single-Family	\$369.57/Unit
¹ Based on current development plans, it is anticipated that the Annexation Group will be in the Land Use Category listed above; however, all taxes will be calculated as set forth in the Rate and Method of Apportionment.			

EXHIBIT B

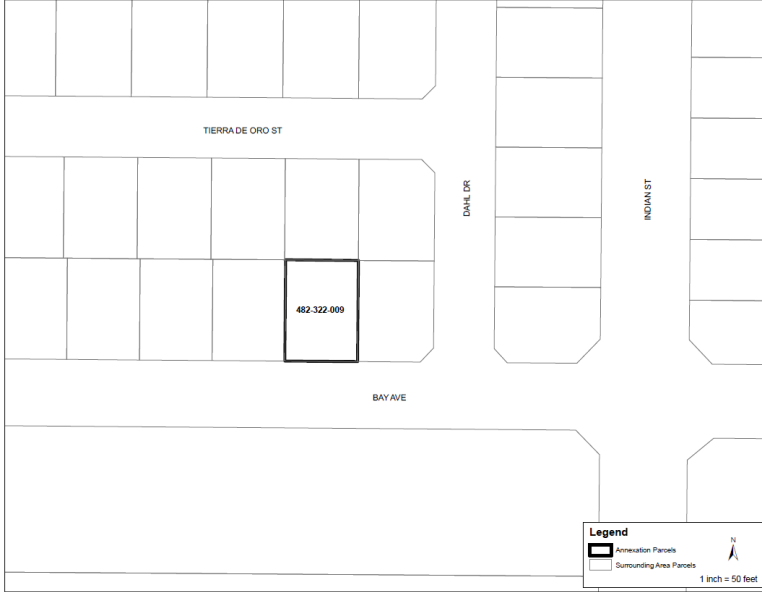
Boundary Map Amendments

**AMENDMENT NO. 302 TO BOUNDARIES OF MORENO VALLEY COMMUNITY SERVICES DISTRICT
COMMUNITY FACILITIES DISTRICT NO. 2021-01
(PARKS MAINTENANCE)**

SHEET 1 OF 1

**MORENO VALLEY COMMUNITY SERVICES DISTRICT
CITY OF MORENO VALLEY
COUNTY OF RIVERSIDE
STATE OF CALIFORNIA**

(THIS MAP AMENDS, BY ADDING THE ADDITIONAL TERRITORY SHOWN HEREON, THE BOUNDARY MAP FOR MORENO VALLEY COMMUNITY SERVICES DISTRICT COMMUNITY FACILITIES DISTRICT NO. 2021-01 (PARKS MAINTENANCE), CITY OF MORENO VALLEY, RIVERSIDE COUNTY, STATE OF CALIFORNIA, PRIOR RECORDED AT BOOK 86 OF MAPS OF ASSESSMENT AND COMMUNITY FACILITIES DISTRICTS AT PAGE 66, IN THE OFFICE OF THE COUNTY RECORDER FOR THE COUNTY OF RIVERSIDE, STATE OF CALIFORNIA.)



FILED IN THE OFFICE OF THE CITY CLERK OF THE CITY OF MORENO VALLEY THIS ____ DAY OF _____, 20__.

CITY CLERK OF THE CITY OF MORENO VALLEY, ACTING IN THE CAPACITY OF THE SECRETARY OF THE MORENO VALLEY COMMUNITY SERVICES DISTRICT

I HEREBY CERTIFY THAT THE WITHIN MAP SHOWING AMENDED BOUNDARIES OF COMMUNITY FACILITIES DISTRICT NO. 2021-01 (PARKS MAINTENANCE) OF THE MORENO VALLEY COMMUNITY SERVICES DISTRICT, CITY OF MORENO VALLEY, COUNTY OF RIVERSIDE, STATE OF CALIFORNIA, WAS APPROVED BY THE BOARD OF DIRECTORS OF THE MORENO VALLEY COMMUNITY SERVICES DISTRICT AT A REGULAR MEETING THEREOF, HELD ON THE ____ DAY OF _____, 20__ BY ITS RESOLUTION NO. _____.

CITY CLERK OF THE CITY OF MORENO VALLEY, ACTING IN THE CAPACITY OF THE SECRETARY OF THE MORENO VALLEY COMMUNITY SERVICES DISTRICT

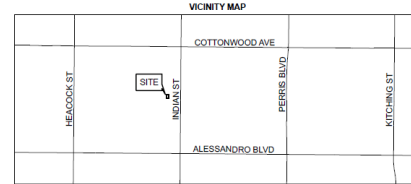
FILED THIS ____ DAY OF _____, 20__ AT THE HOUR OF ____ O'CLOCK ____ M. IN THE BOOK ____ OF MAPS OF ASSESSMENT AND COMMUNITY FACILITIES DISTRICTS AS INSTRUMENT NO. _____ IN THE OFFICE OF THE COUNTY RECORDER OF THE COUNTY OF RIVERSIDE, STATE OF CALIFORNIA.

COUNTY RECORDER
COUNTY OF RIVERSIDE
STATE OF CALIFORNIA

REFERENCE IS MADE TO THAT BOUNDARY MAP OF THE COMMUNITY FACILITIES DISTRICT NO. 2021-01 (PARKS MAINTENANCE) OF THE MORENO VALLEY COMMUNITY SERVICES DISTRICT, RECORDED WITH THE RIVERSIDE COUNTY RECORDER'S OFFICE ON MAY 4, 2021 IN BOOK 86 OF MAPS OF ASSESSMENT AND COMMUNITY FACILITIES DISTRICTS AS INSTRUMENT NO. 2021-020004.

REFERENCE IS FURTHER MADE TO ANNEXATION MAP NO. 4 OF COMMUNITY FACILITIES DISTRICT NO. 2021-01 (PARKS MAINTENANCE) OF THE MORENO VALLEY COMMUNITY SERVICES DISTRICT, CITY OF MORENO VALLEY, COUNTY OF RIVERSIDE, STATE OF CALIFORNIA, TERRITORY PROPOSED FOR ANNEXATION IN THE FUTURE, WITH THE CONDITION THAT PARCELS WITHIN THE TERRITORY MAY BE ANNEXED ONLY WITH THE UNANIMOUS APPROVAL OF THE OWNERS OR OWNERS OF EACH PARCEL OR PARCELS AT THE TIME THAT PARCEL OR THOSE PARCELS ARE ANNEXED, RECORDED WITH THE RIVERSIDE COUNTY RECORDER'S OFFICE ON OCTOBER 27, 2021 IN BOOK 87, PAGE 51 OF MAPS OF ASSESSMENT AND COMMUNITY FACILITIES DISTRICTS AS INSTRUMENT NO. 2021-055742, WHICH DESIGNATED THE TERRITORY SHOWN HEREIN AS TERRITORY FOR FUTURE ANNEXATION TO THE COMMUNITY FACILITIES DISTRICT REFERENCED THEREON.

FOR PARTICULARS OF THE LINES AND DIMENSIONS OF ASSESSOR PARCELS, REFERENCE IS MADE TO THE MAPS OF THE ASSESSOR, COUNTY OF RIVERSIDE, STATE OF CALIFORNIA. THE RIVERSIDE COUNTY ASSESSOR'S MAPS SHALL GOVERN FOR ALL DETAILS CONCERNING THE LINES AND DIMENSIONS OF SUCH LOTS OR PARCELS.



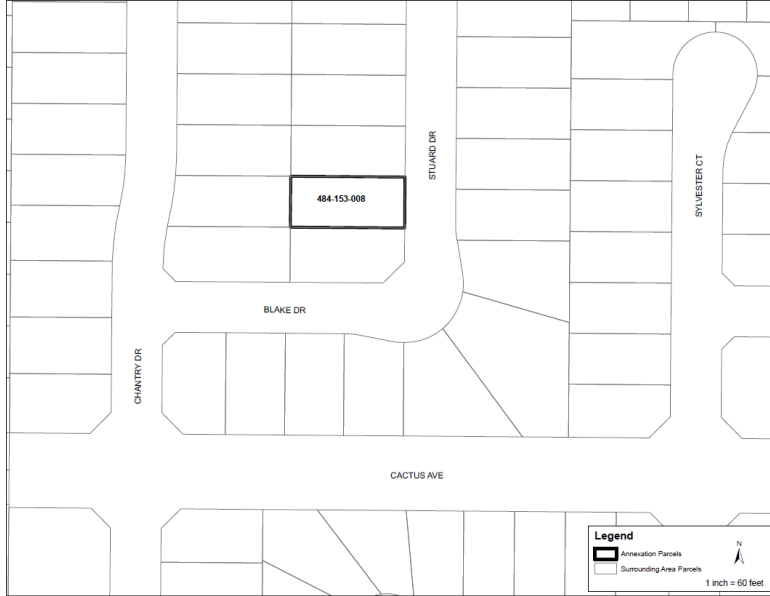
WILLDAN
2736 Via Industrial, Suite 200
Brea, CA 92620
(951) 867-3000

**AMENDMENT NO. 325 TO BOUNDARIES OF MORENO VALLEY COMMUNITY SERVICES DISTRICT
COMMUNITY FACILITIES DISTRICT NO. 2021-01
(PARKS MAINTENANCE)**

SHEET 1 OF 1

**MORENO VALLEY COMMUNITY SERVICES DISTRICT
CITY OF MORENO VALLEY
COUNTY OF RIVERSIDE
STATE OF CALIFORNIA**

(THIS MAP AMENDS BY ADDING THE ADDITIONAL TERRITORY SHOWN HEREON THE BOUNDARY MAP FOR MORENO VALLEY COMMUNITY SERVICES DISTRICT COMMUNITY FACILITIES DISTRICT NO. 2021-01 (PARKS MAINTENANCE), CITY OF MORENO VALLEY, RIVERSIDE COUNTY, STATE OF CALIFORNIA, PRIOR RECORDED AT BOOK 86 OF MAPS OF ASSESSMENT AND COMMUNITY FACILITIES DISTRICTS AT PAGE 95, IN THE OFFICE OF THE COUNTY RECORDER FOR THE COUNTY OF RIVERSIDE, STATE OF CALIFORNIA.)



FILED IN THE OFFICE OF THE CITY CLERK OF THE CITY OF MORENO VALLEY THIS _____ DAY OF _____, 20____.

CITY CLERK OF THE CITY OF MORENO VALLEY, ACTING IN THE CAPACITY OF THE SECRETARY OF THE MORENO VALLEY COMMUNITY SERVICES DISTRICT.

I HEREBY CERTIFY THAT THE WITHIN MAP SHOWING AMENDED BOUNDARIES OF COMMUNITY FACILITIES DISTRICT NO. 2021-01 (PARKS MAINTENANCE), OF THE MORENO VALLEY COMMUNITY SERVICES DISTRICT, CITY OF MORENO VALLEY, COUNTY OF RIVERSIDE, STATE OF CALIFORNIA, WAS APPROVED BY THE BOARD OF DIRECTORS OF THE MORENO VALLEY COMMUNITY SERVICES DISTRICT AT A REGULAR MEETING THEREOF, HELD ON THE _____ DAY OF _____, 20____, BY ITS RESOLUTION NO. _____.

CITY CLERK OF THE CITY OF MORENO VALLEY, ACTING IN THE CAPACITY OF THE SECRETARY OF THE MORENO VALLEY COMMUNITY SERVICES DISTRICT.

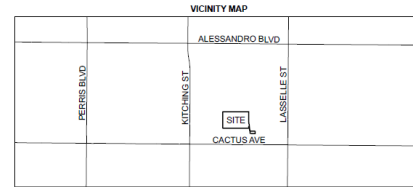
FILED THIS _____ DAY OF _____, 20____, AT THE HOUR OF _____ O'CLOCK _____ M. IN THE BOOK _____ PAGE(S) _____ OF MAPS OF ASSESSMENT AND COMMUNITY FACILITIES DISTRICTS AS INSTRUMENT NO. _____ IN THE OFFICE OF THE COUNTY RECORDER OF THE COUNTY OF RIVERSIDE, STATE OF CALIFORNIA.

COUNTY RECORDER
COUNTY OF RIVERSIDE
STATE OF CALIFORNIA

REFERENCE IS MADE TO THE BOUNDARY MAP OF THE COMMUNITY FACILITIES DISTRICT NO. 2021-01 (PARKS MAINTENANCE) OF THE MORENO VALLEY COMMUNITY SERVICES DISTRICT, RECORDED WITH THE RIVERSIDE COUNTY RECORDER'S OFFICE ON MAY 4, 2021 IN BOOK 86 OF MAPS OF ASSESSMENT AND COMMUNITY FACILITIES DISTRICTS AS INSTRUMENT NO. 2021-0206004.

REFERENCE IS FURTHER MADE TO ANNEXATION MAP NO. 4 OF COMMUNITY FACILITIES DISTRICT NO. 2021-01 (PARKS MAINTENANCE) OF THE MORENO VALLEY COMMUNITY SERVICES DISTRICT, CITY OF MORENO VALLEY, COUNTY OF RIVERSIDE, STATE OF CALIFORNIA (TERRITORY PROPOSED FOR ANNEXATION IN THE FUTURE, WITH THE CONDITION THAT PARCELS WITHIN THE TERRITORY MAY BE ANNEXED ONLY WITH THE UNANIMOUS APPROVAL OF THE OWNER OR OWNERS OF EACH PARCEL OR PARCELS AT THE TIME THAT PARCEL OR THOSE PARCELS ARE ANNEXED), RECORDED WITH THE RIVERSIDE COUNTY RECORDER'S OFFICE ON OCTOBER 27, 2021 IN BOOK 87, PAGE 81 OF MAPS OF ASSESSMENT AND COMMUNITY FACILITIES DISTRICTS AS INSTRUMENT NO. 2021-069742 WHICH DESIGNATED THE TERRITORY SHOWN HEREIN AS TERRITORY FOR FUTURE ANNEXATION TO THE COMMUNITY FACILITIES DISTRICT REFERENCED THEREON.

FOR PARTICULARS OF THE LINES AND DIMENSIONS OF ASSESSOR PARCELS, REFERENCE IS MADE TO THE MAPS OF THE ASSESSOR, COUNTY OF RIVERSIDE, STATE OF CALIFORNIA. THE RIVERSIDE COUNTY ASSESSOR'S MAPS SHALL GOVERN FOR ALL DETAILS CONCERNING THE LINES AND DIMENSIONS OF SUCH LOTS OR PARCELS.

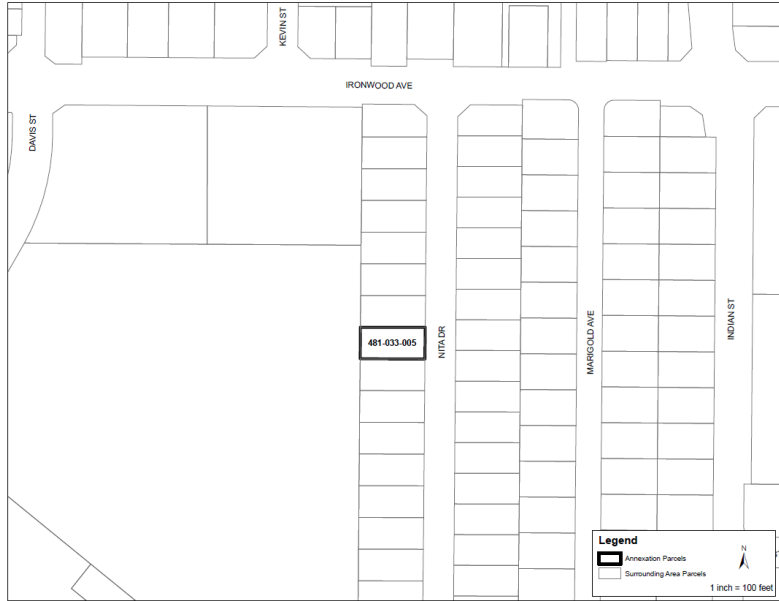


WILLDAN
2738 Via Italiana, Suite 200
San Diego, CA 92108
(619) 587-3500

**AMENDMENT NO. 331 TO BOUNDARIES OF MORENO VALLEY COMMUNITY SERVICES DISTRICT
COMMUNITY FACILITIES DISTRICT NO. 2021-01
(PARKS MAINTENANCE)**

**MORENO VALLEY COMMUNITY SERVICES DISTRICT
CITY OF MORENO VALLEY
STATE OF CALIFORNIA**

(THIS MAP AMENDS, BY ADDING THE ADDITIONAL TERRITORY SHOWN HEREON, THE BOUNDARY MAP FOR MORENO VALLEY COMMUNITY SERVICES DISTRICT COMMUNITY FACILITIES DISTRICT NO. 2021-01 (PARKS MAINTENANCE), CITY OF MORENO VALLEY, RIVERSIDE COUNTY, STATE OF CALIFORNIA, PRIOR RECORDED AT BOOK 88 OF MAPS OF ASSESSMENT AND COMMUNITY FACILITIES DISTRICTS AT PAGE 66, IN THE OFFICE OF THE COUNTY RECORDER FOR THE COUNTY OF RIVERSIDE, STATE OF CALIFORNIA.)



FILED IN THE OFFICE OF THE CITY CLERK OF THE CITY OF MORENO VALLEY THIS ____ DAY OF ____ 20__.

CITY CLERK OF THE CITY OF MORENO VALLEY, ACTING IN THE CAPACITY OF THE SECRETARY OF THE MORENO VALLEY COMMUNITY SERVICES DISTRICT

I HEREBY CERTIFY THAT THE WITHIN MAP SHOWING AMENDED BOUNDARIES OF COMMUNITY FACILITIES DISTRICT NO. 2021-01 (PARKS MAINTENANCE) OF THE MORENO VALLEY COMMUNITY SERVICES DISTRICT, CITY OF MORENO VALLEY COUNTY OF RIVERSIDE, STATE OF CALIFORNIA, WAS APPROVED BY THE BOARD OF DIRECTORS OF THE MORENO VALLEY COMMUNITY SERVICES DISTRICT AT A REGULAR MEETING THEREOF, HELD ON THE ____ DAY OF ____ 20__ BY ITS RESOLUTION NO. ____.

CITY CLERK OF THE CITY OF MORENO VALLEY, ACTING IN THE CAPACITY OF THE SECRETARY OF THE MORENO VALLEY COMMUNITY SERVICES DISTRICT

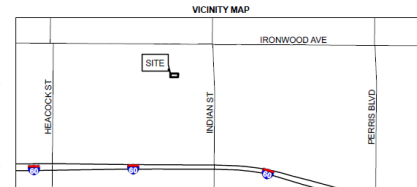
FILED THIS ____ DAY OF ____ 20__ AT THE HOUR OF ____ O'CLOCK ____ M. IN THE BOOK ____ PAGE(S) ____ OF MAPS OF ASSESSMENT AND COMMUNITY FACILITIES DISTRICTS AS INSTRUMENT NO. ____ IN THE OFFICE OF THE COUNTY RECORDER OF THE COUNTY OF RIVERSIDE, STATE OF CALIFORNIA.

COUNTY RECORDER
COUNTY OF RIVERSIDE
STATE OF CALIFORNIA

REFERENCE IS MADE TO THAT BOUNDARY MAP OF THE COMMUNITY FACILITIES DISTRICT NO. 2021-01 (PARKS MAINTENANCE) OF THE MORENO VALLEY COMMUNITY SERVICES DISTRICT RECORDED WITH THE RIVERSIDE COUNTY RECORDER'S OFFICE ON MAY 4, 2021 IN BOOK 88 OF MAPS OF ASSESSMENT AND COMMUNITY FACILITIES DISTRICTS, PAGE 66 AS INSTRUMENT NO. 2021-028004.

REFERENCE IS FURTHER MADE TO ANNEXATION MAP NO. 4 OF COMMUNITY FACILITIES DISTRICT NO. 2021-01 (PARKS MAINTENANCE) OF THE MORENO VALLEY COMMUNITY SERVICES DISTRICT, CITY OF MORENO VALLEY, COUNTY OF RIVERSIDE, STATE OF CALIFORNIA (TERRITORY PROPOSED FOR ANNEXATION IN THE FUTURE, WITH THE CONDITION THAT PARCELS WITHIN THE TERRITORY MAY BE ANNEXED ONLY WITH THE UNANIMOUS APPROVAL OF THE OWNER OR OWNERS OF EACH PARCEL OR PARCELS AT THE TIME THAT PARCEL OR THOSE PARCELS ARE ANNEXED) RECORDED WITH THE RIVERSIDE COUNTY RECORDER'S OFFICE ON OCTOBER 27, 2021 IN BOOK 87, PAGE 81 OF MAPS OF ASSESSMENT AND COMMUNITY FACILITIES DISTRICTS AS INSTRUMENT NO. 2021-055274 WHICH DESIGNATED THE TERRITORY SHOWN HEREIN AS TERRITORY FOR FUTURE ANNEXATION TO THE COMMUNITY FACILITIES DISTRICT REFERENCED THEREON.

FOR PARTICULARS OF THE LINES AND DIMENSIONS OF ASSESSOR PARCELS, REFERENCE IS MADE TO THE MAPS OF THE ASSESSOR, COUNTY OF RIVERSIDE, STATE OF CALIFORNIA. THE RIVERSIDE COUNTY ASSESSOR'S MAPS SHALL GOVERN FOR ALL DETAILS CONCERNING THE LINES AND DIMENSIONS OF SUCH LOTS OR PARCELS.

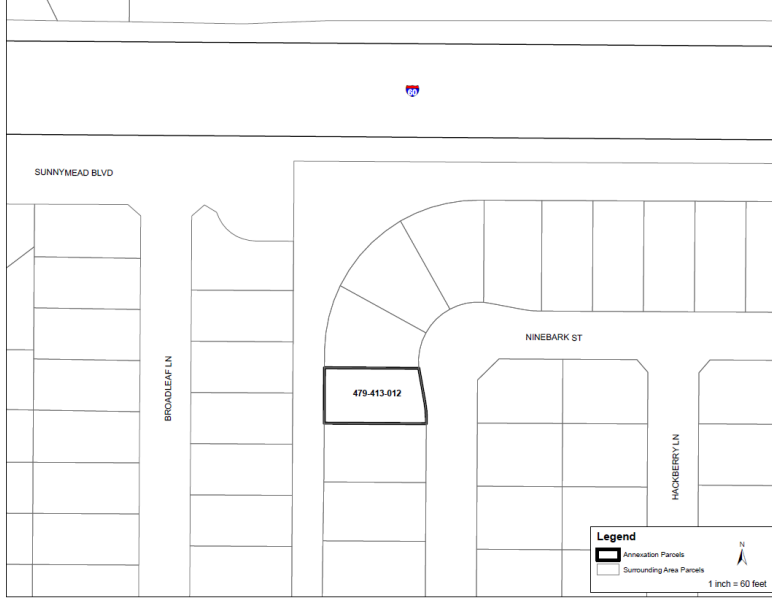


**AMENDMENT NO. 332 TO BOUNDARIES OF MORENO VALLEY COMMUNITY SERVICES DISTRICT
COMMUNITY FACILITIES DISTRICT NO. 2021-01
(PARKS MAINTENANCE)**

SHEET 1 OF 1

**MORENO VALLEY COMMUNITY SERVICES DISTRICT
CITY OF MORENO VALLEY
COUNTY OF RIVERSIDE
STATE OF CALIFORNIA**

(THIS MAP AMENDS, BY ADDING THE ADDITIONAL TERRITORY SHOWN HEREON, THE BOUNDARY MAP FOR MORENO VALLEY COMMUNITY SERVICES DISTRICT COMMUNITY FACILITIES DISTRICT NO. 2021-01 (PARKS MAINTENANCE), CITY OF MORENO VALLEY, RIVERSIDE COUNTY, STATE OF CALIFORNIA, PRIOR RECORDED AT BOOK 86 OF MAPS OF ASSESSMENT AND COMMUNITY FACILITIES DISTRICTS AT PAGE 66, IN THE OFFICE OF THE COUNTY RECORDER FOR THE COUNTY OF RIVERSIDE, STATE OF CALIFORNIA.)



FILED IN THE OFFICE OF THE CITY CLERK OF THE CITY OF MORENO VALLEY THIS ____ DAY OF _____, 20__.

CITY CLERK OF THE CITY OF MORENO VALLEY, ACTING IN THE CAPACITY OF THE SECRETARY OF THE MORENO VALLEY COMMUNITY SERVICES DISTRICT

I HEREBY CERTIFY THAT THE WITHIN MAP SHOWING AMENDED BOUNDARIES OF COMMUNITY FACILITIES DISTRICT NO. 2021-01 (PARKS MAINTENANCE), OF THE MORENO VALLEY COMMUNITY SERVICES DISTRICT, CITY OF MORENO VALLEY, COUNTY OF RIVERSIDE, STATE OF CALIFORNIA, WAS APPROVED BY THE BOARD OF DIRECTORS OF THE MORENO VALLEY COMMUNITY SERVICES DISTRICT AT A REGULAR MEETING THEREOF, HELD ON THE ____ DAY OF _____, 20__, BY ITS RESOLUTION NO. _____.

CITY CLERK OF THE CITY OF MORENO VALLEY, ACTING IN THE CAPACITY OF THE SECRETARY OF THE MORENO VALLEY COMMUNITY SERVICES DISTRICT

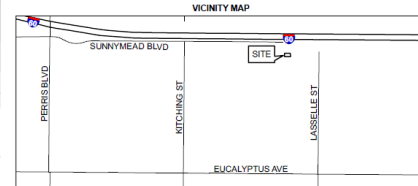
FILED THIS ____ DAY OF _____, 20__, AT THE HOUR OF ____ O'CLOCK ____ M. IN THE BOOK ____ PAGE(S) ____ OF MAPS OF ASSESSMENT AND COMMUNITY FACILITIES DISTRICTS AS INSTRUMENT NO. _____ IN THE OFFICE OF THE COUNTY RECORDER OF THE COUNTY OF RIVERSIDE, STATE OF CALIFORNIA.

COUNTY RECORDER
COUNTY OF RIVERSIDE
STATE OF CALIFORNIA

REFERENCE IS MADE TO THAT BOUNDARY MAP OF THE COMMUNITY FACILITIES DISTRICT NO. 2021-01 (PARKS MAINTENANCE) OF THE MORENO VALLEY COMMUNITY SERVICES DISTRICT RECORDED WITH THE RIVERSIDE COUNTY RECORDER'S OFFICE ON MAY 4, 2021 IN BOOK 86 OF MAPS OF ASSESSMENT AND COMMUNITY FACILITIES DISTRICTS, PAGE 66 AS INSTRUMENT NO. 2021-020004.

REFERENCE IS FURTHER MADE TO ANNEXATION MAP NO. 4 OF COMMUNITY FACILITIES DISTRICT NO. 2021-01 (PARKS MAINTENANCE) OF THE MORENO VALLEY COMMUNITY SERVICES DISTRICT, CITY OF MORENO VALLEY, COUNTY OF RIVERSIDE, STATE OF CALIFORNIA, TERRITORY PROPOSED FOR ANNEXATION IN THE FUTURE, WITH THE CONDITION THAT PARCELS WITHIN THE TERRITORY MAY BE ANNEXED ONLY WITH THE UNANIMOUS APPROVAL OF THE OWNER OR OWNERS OF EACH PARCEL OR PARCELS AT THE TIME THAT PARCEL OR THOSE PARCELS ARE ANNEXED, RECORDED WITH THE RIVERSIDE COUNTY RECORDER'S OFFICE ON OCTOBER 27, 2021 IN BOOK 87, PAGE 81 OF MAPS OF ASSESSMENT AND COMMUNITY FACILITIES DISTRICTS AS INSTRUMENT NO. 2021-0252742 WHICH DESIGNATED THE TERRITORY SHOWN HEREIN AS TERRITORY FOR FUTURE ANNEXATION TO THE COMMUNITY FACILITIES DISTRICT REFERENCED THEREON.

FOR PARTICULARS OF THE LINES AND DIMENSIONS OF ASSESSOR PARCELS, REFERENCE IS MADE TO THE MAPS OF THE ASSESSOR, COUNTY OF RIVERSIDE, STATE OF CALIFORNIA. THE RIVERSIDE COUNTY ASSESSOR'S MAPS SHALL GOVERN FOR ALL DETAILS CONCERNING THE LINES AND DIMENSIONS OF SUCH LOTS OR PARCELS.

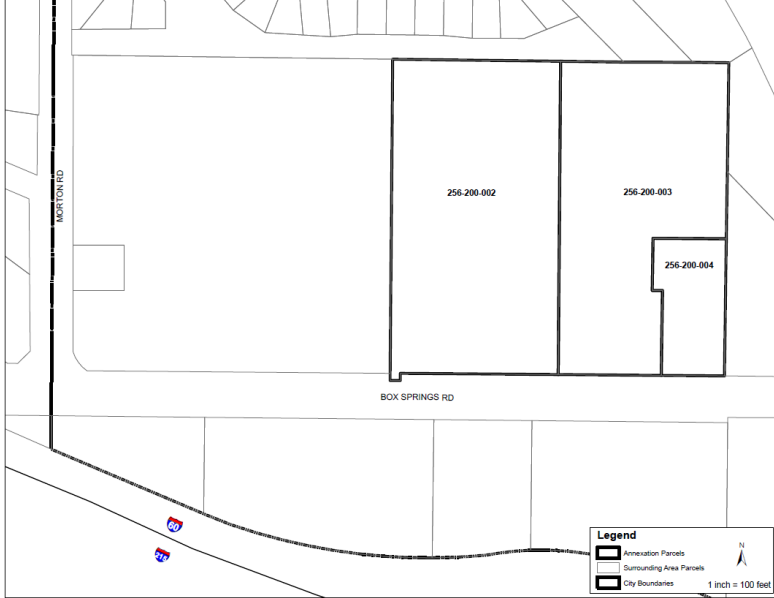


WILLDAN
27365 Via Industria, Suite 200
San Diego, CA 92108
(619) 581-3500

**AMENDMENT NO. 334 TO BOUNDARIES OF MORENO VALLEY COMMUNITY SERVICES DISTRICT
COMMUNITY FACILITIES DISTRICT NO. 2021-01
(PARKS MAINTENANCE)**

**MORENO VALLEY COMMUNITY SERVICES DISTRICT
CITY OF MORENO VALLEY
COUNTY OF RIVERSIDE
STATE OF CALIFORNIA**

(THIS MAP AMENDS, BY ADDING THE ADDITIONAL TERRITORY SHOWN HEREON, THE BOUNDARY MAP FOR MORENO VALLEY COMMUNITY SERVICES DISTRICT COMMUNITY FACILITIES DISTRICT NO. 2021-01 (PARKS MAINTENANCE), CITY OF MORENO VALLEY, RIVERSIDE COUNTY, STATE OF CALIFORNIA, PRIOR RECORDED AT BOOK 88 OF MAPS OF ASSESSMENT AND COMMUNITY FACILITIES DISTRICTS AT PAGE 46, IN THE OFFICE OF THE COUNTY RECORDER FOR THE COUNTY OF RIVERSIDE, STATE OF CALIFORNIA.)



FILED IN THE OFFICE OF THE CITY CLERK OF THE CITY OF MORENO VALLEY THIS _____ DAY OF _____, 20____.

CITY CLERK OF THE CITY OF MORENO VALLEY, ACTING IN THE CAPACITY OF THE SECRETARY OF THE MORENO VALLEY COMMUNITY SERVICES DISTRICT

I HEREBY CERTIFY THAT THE WITHIN MAP SHOWING AMENDED BOUNDARIES OF COMMUNITY FACILITIES DISTRICT NO. 2021-01 (PARKS MAINTENANCE), OF THE MORENO VALLEY COMMUNITY SERVICES DISTRICT CITY OF MORENO VALLEY, COUNTY OF RIVERSIDE, STATE OF CALIFORNIA, WAS APPROVED BY THE BOARD OF DIRECTORS OF THE MORENO VALLEY COMMUNITY SERVICES DISTRICT AT A REGULAR MEETING THEREOF, HELD ON THE _____ DAY OF _____, 20____ BY ITS RESOLUTION NO. _____.

CITY CLERK OF THE CITY OF MORENO VALLEY, ACTING IN THE CAPACITY OF THE SECRETARY OF THE MORENO VALLEY COMMUNITY SERVICES DISTRICT

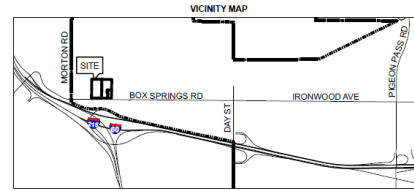
FILED THIS _____ DAY OF _____, 20____, AT THE HOUR OF _____ O'CLOCK _____ M. IN THE BOOK _____ PAGE(S) _____ OF MAPS OF ASSESSMENT AND COMMUNITY FACILITIES DISTRICTS AS INSTRUMENT NO. _____ IN THE OFFICE OF THE COUNTY RECORDER OF THE COUNTY OF RIVERSIDE, STATE OF CALIFORNIA.

COUNTY RECORDER
COUNTY OF RIVERSIDE
STATE OF CALIFORNIA

REFERENCE IS MADE TO THAT BOUNDARY MAP OF THE COMMUNITY FACILITIES DISTRICT NO. 2021-01 (PARKS MAINTENANCE) OF THE MORENO VALLEY COMMUNITY SERVICES DISTRICT RECORDED WITH THE RIVERSIDE COUNTY RECORDER'S OFFICE ON MAY 4, 2021 IN BOOK 88 OF MAPS OF ASSESSMENT AND COMMUNITY FACILITIES DISTRICTS, PAGE 46 AS INSTRUMENT NO. 2021-02004.

REFERENCE IS FURTHER MADE TO ANNEXATION MAP NO. 4 OF COMMUNITY FACILITIES DISTRICT NO. 2021-01 (PARKS MAINTENANCE) OF THE MORENO VALLEY COMMUNITY SERVICES DISTRICT, CITY OF MORENO VALLEY, COUNTY OF RIVERSIDE, STATE OF CALIFORNIA TERRITORY PROPOSED FOR ANNEXATION IN THE FUTURE, WITH THE CONDITION THAT PARCELS WITHIN THE TERRITORY MAY BE ANNEXED ONLY WITH THE UNANIMOUS APPROVAL OF THE OWNER OR OWNERS OF EACH PARCEL OR PARCELS AT THE TIME THAT PARCEL OR THOSE PARCELS ARE ANNEXED) RECORDED WITH THE RIVERSIDE COUNTY RECORDER'S OFFICE ON OCTOBER 27, 2021 IN BOOK 87, PAGE 81 OF MAPS OF ASSESSMENT AND COMMUNITY FACILITIES DISTRICTS AS INSTRUMENT NO. 2021-025742 WHICH DESIGNATED THE TERRITORY SHOWN HEREON AS TERRITORY FOR FUTURE ANNEXATION TO THE COMMUNITY FACILITIES DISTRICT REPRODUCED THEREON.

FOR PARTICULARS OF THE LINES AND DIMENSIONS OF ASSESSOR PARCELS, REFERENCE IS MADE TO THE MAPS OF THE ASSESSOR, COUNTY OF RIVERSIDE, STATE OF CALIFORNIA. THE RIVERSIDE COUNTY ASSESSOR'S MAPS SHALL GOVERN FOR ALL DETAILS CONCERNING THE LINES AND DIMENSIONS OF SUCH LOTS OR PARCELS.



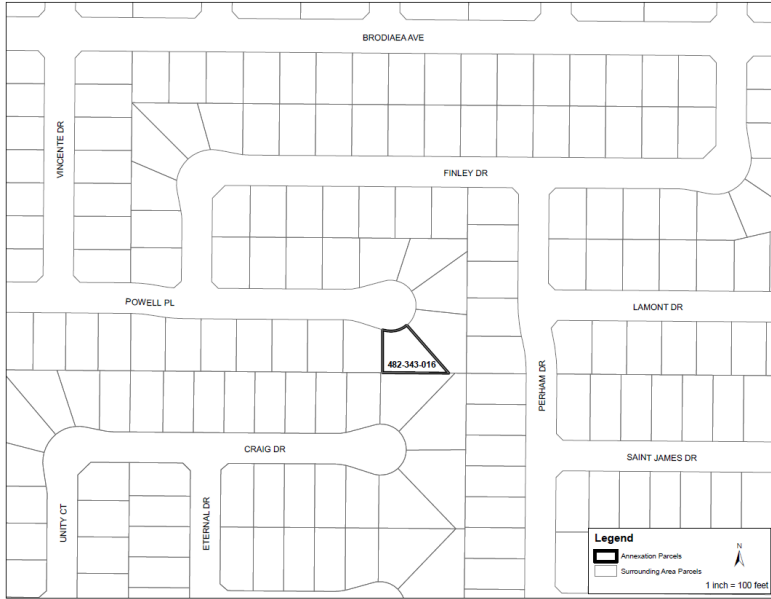
WILLDAN
27366 Via Industria, Suite 200
Irvine, CA 92614
(949) 261-3000

**AMENDMENT NO. 336 TO BOUNDARIES OF MORENO VALLEY COMMUNITY SERVICES DISTRICT
COMMUNITY FACILITIES DISTRICT NO. 2021-01
(PARKS MAINTENANCE)**

SHEET 1 OF 1

**MORENO VALLEY COMMUNITY SERVICES DISTRICT
CITY OF MORENO VALLEY
COUNTY OF RIVERSIDE
STATE OF CALIFORNIA**

(THIS MAP AMENDS, BY ADDING THE ADDITIONAL TERRITORY SHOWN HEREON, THE BOUNDARY MAP FOR MORENO VALLEY COMMUNITY SERVICES DISTRICT COMMUNITY FACILITIES DISTRICT NO. 2021-01 (PARKS MAINTENANCE), CITY OF MORENO VALLEY, RIVERSIDE COUNTY, STATE OF CALIFORNIA, PRIOR RECORDED AT BOOK 98 OF MAPS OF ASSESSMENT AND COMMUNITY FACILITIES DISTRICTS AT PAGE 95, IN THE OFFICE OF THE COUNTY RECORDER FOR THE COUNTY OF RIVERSIDE, STATE OF CALIFORNIA.)



FILED IN THE OFFICE OF THE CITY CLERK OF THE CITY OF MORENO VALLEY THIS _____ DAY OF _____, 20__.

CITY CLERK OF THE CITY OF MORENO VALLEY, ACTING IN THE CAPACITY OF THE SECRETARY OF THE MORENO VALLEY COMMUNITY SERVICES DISTRICT.

I HEREBY CERTIFY THAT THE WITHIN MAP SHOWING AMENDED BOUNDARIES OF COMMUNITY FACILITIES DISTRICT NO. 2021-01 (PARKS MAINTENANCE) OF THE MORENO VALLEY COMMUNITY SERVICES DISTRICT, CITY OF MORENO VALLEY, COUNTY OF RIVERSIDE, STATE OF CALIFORNIA, WAS APPROVED BY THE BOARD OF DIRECTORS OF THE MORENO VALLEY COMMUNITY SERVICES DISTRICT AT A REGULAR MEETING THEREOF, HELD ON THE _____ DAY OF _____, 20__, BY ITS RESOLUTION NO. _____.

CITY CLERK OF THE CITY OF MORENO VALLEY, ACTING IN THE CAPACITY OF THE SECRETARY OF THE MORENO VALLEY COMMUNITY SERVICES DISTRICT.

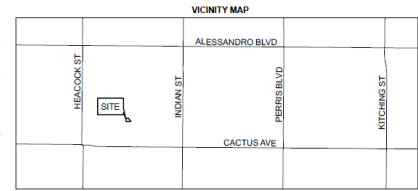
FILED THIS _____ DAY OF _____, 20__ AT THE HOUR OF _____ O'CLOCK _____ M IN THE BOOK _____ PAGE(S) _____ OF MAPS OF ASSESSMENT AND COMMUNITY FACILITIES DISTRICTS AS REFERRED TO NO. _____ IN THE OFFICE OF THE COUNTY RECORDER OF THE COUNTY OF RIVERSIDE, STATE OF CALIFORNIA.

COUNTY RECORDER
COUNTY OF RIVERSIDE
STATE OF CALIFORNIA

REFERENCE IS MADE TO THAT BOUNDARY MAP OF THE COMMUNITY FACILITIES DISTRICT NO. 2021-01 (PARKS MAINTENANCE) OF THE MORENO VALLEY COMMUNITY SERVICES DISTRICT RECORDED WITH THE RIVERSIDE COUNTY RECORDER'S OFFICE ON MAY 4, 2021 IN BOOK 98 OF MAPS OF ASSESSMENT AND COMMUNITY FACILITIES DISTRICTS PAGE 95 AS INSTRUMENT NO. 2021-020004.

REFERENCE IS FURTHER MADE TO ANNEXATION MAP NO. 4 OF COMMUNITY FACILITIES DISTRICT NO. 2021-01 (PARKS MAINTENANCE) OF THE MORENO VALLEY COMMUNITY SERVICES DISTRICT, CITY OF MORENO VALLEY, COUNTY OF RIVERSIDE, STATE OF CALIFORNIA TERRITORY PROPOSED FOR ANNEXATION IN THE FUTURE, WITH THE CONDITION THAT PARCELS WITHIN THE TERRITORY MAY BE ANNEXED ONLY WITH THE UNANIMOUS APPROVAL OF THE OWNER OR OWNERS OF EACH PARCEL OR PARCELS AT THE TIME THAT PARCEL OR THOSE PARCELS ARE ANNEXED; RECORDED WITH THE RIVERSIDE COUNTY RECORDER'S OFFICE ON OCTOBER 27, 2021 IN BOOK 97, PAGE 81 OF MAPS OF ASSESSMENT AND COMMUNITY FACILITIES DISTRICTS AS INSTRUMENT NO. 2021-083742 WHICH DESIGNATED THE TERRITORY SHOWN HEREIN AS TERRITORY FOR FUTURE ANNEXATION TO THE COMMUNITY FACILITIES DISTRICT REFERENCED THEREON.

FOR PARTICULARS OF THE LINES AND DIMENSIONS OF ASSESSOR PARCELS, REFERENCE IS MADE TO THE MAPS OF THE ASSESSOR, COUNTY OF RIVERSIDE, STATE OF CALIFORNIA. THE RIVERSIDE COUNTY ASSESSOR'S MAPS SHALL GOVERN FOR ALL DETAILS CONCERNING THE LINES AND DIMENSIONS OF SUCH LOTS OR PARCELS.



WILLDAN
27366 VIA PASADENA, SUITE 200
SHERMAN, CA 95768
(951) 981-2000