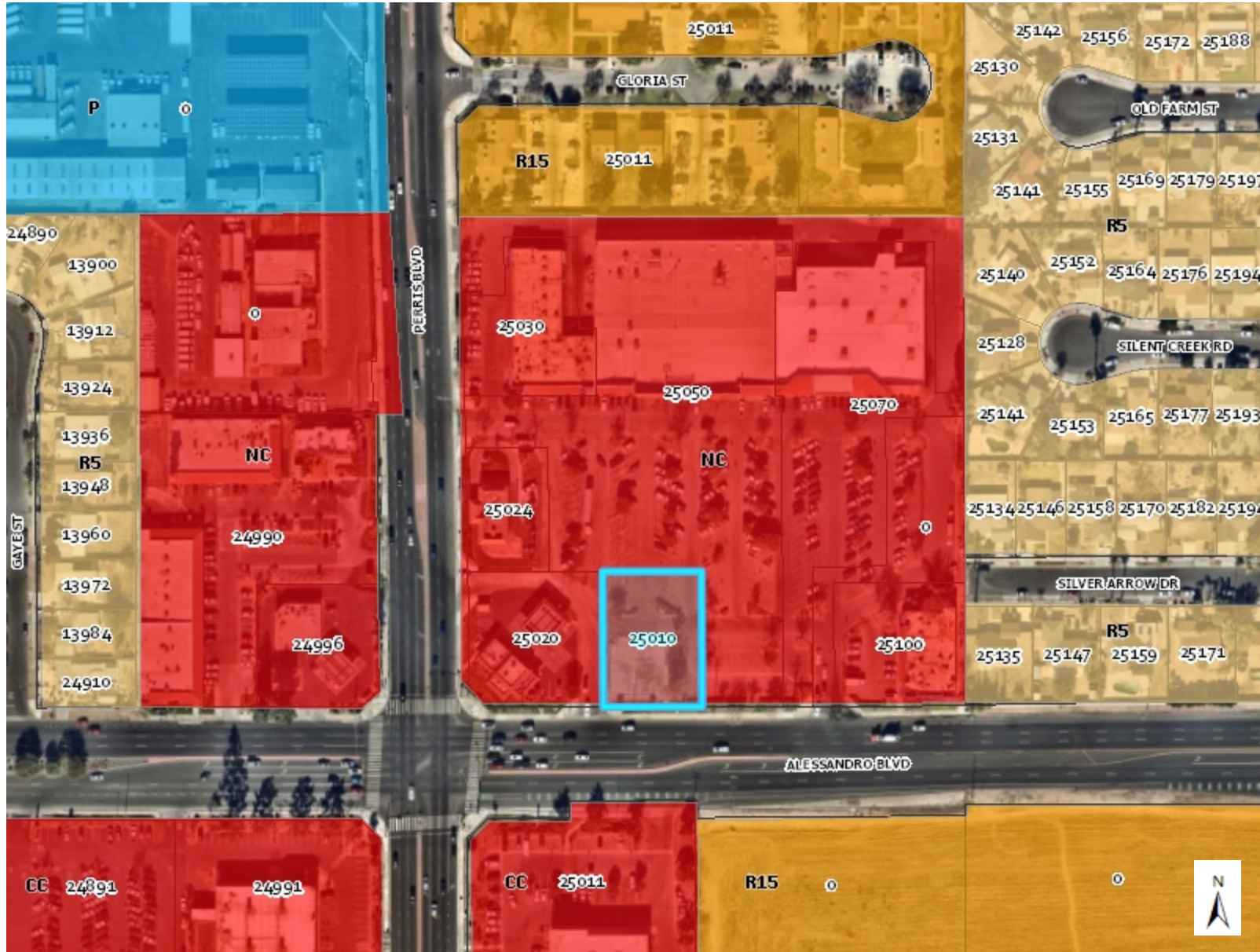


# ZONING MAP



## Legend

### Zoning

- Commercial
- Corridor Mixed Use
- Downtown Center
- Industrial/Business Park
- Public Facilities
- Office
- Planned Development
- Large Lot Residential
- Residential Agriculture 2 DU/AC
- Residential 2 DU/AC
- Suburban Residential
- Multi-family
- Open Space/Park

### Master Plan of Trails

- Bridge
- Improved
- Multiuse
- Proposed
- Regional
- State

### Road Labels

- Parcels
  - City Boundary
  - Sphere of Influence
- Image Source: Nearmap

## Notes:

25040 Alessandro Boulevard  
APN: 479-220-017  
Acres: 0.46  
Neighborhood Commercial (NC)

372.8 0 186.38 372.8 Feet

WGS\_1984\_Web\_Mercator\_Auxiliary\_Sphere

Print Date: 4/9/2025

**DISCLAIMER:** The information shown on this map was compiled from the City of Moreno Valley GIS and Riverside County GIS. The land base and facility information on this map is for display purposes only and should not be relied upon without independent verification as to its accuracy. Riverside County and City of Moreno Valley will not be held responsible for any claims, losses or damages resulting from the use of this map.