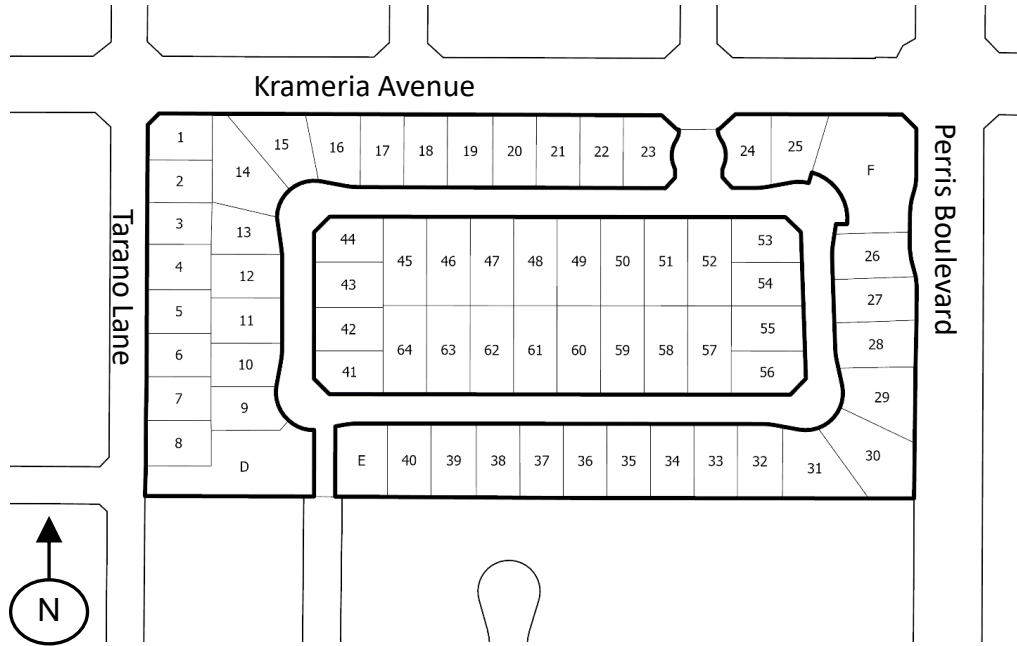


PROPOSED BOUNDARIES OF
VAL VERDE UNIFIED SCHOOL DISTRICT
COMMUNITY FACILITIES DISTRICT NO. 2025-1
RIVERSIDE COUNTY
STATE OF CALIFORNIA
CITY OF MORENO VALLEY



Ref No.	APN	Ref No.	APN
1	316-230-001	33	316-230-033
2	316-230-002	34	316-230-034
3	316-230-003	35	316-230-035
4	316-230-004	36	316-230-036
5	316-230-005	37	316-230-037
6	316-230-006	38	316-230-038
7	316-230-007	39	316-230-039
8	316-230-008	40	316-230-040
9	316-230-009	41	316-230-041
10	316-230-010	42	316-230-042
11	316-230-011	43	316-230-043
12	316-230-012	44	316-230-044
13	316-230-013	45	316-230-045
14	316-230-014	46	316-230-046
15	316-230-015	47	316-230-047
16	316-230-016	48	316-230-048
17	316-230-017	49	316-230-049
18	316-230-018	50	316-230-050
19	316-230-019	51	316-230-051
20	316-230-020	52	316-230-052
21	316-230-021	53	316-230-053
22	316-230-022	54	316-230-054
23	316-230-023	55	316-230-055
24	316-230-024	56	316-230-056
25	316-230-025	57	316-230-057
26	316-230-026	58	316-230-058
27	316-230-027	59	316-230-059
28	316-230-028	60	316-230-060
29	316-230-029	61	316-230-061
30	316-230-030	62	316-230-062
31	316-230-031	63	316-230-063
32	316-230-032	64	316-230-064

(1) Filed in the office of the Clerk of the Governing Board of the Val Verde Unified School District this ____ day of _____, 20__.

Clerk of the Governing Board


(2) I hereby certify that the within map showing the proposed boundaries of Community Facilities District No. 2025-1 of the Val Verde Unified School District, Riverside County, State of California, was approved by the Governing Board of the Val Verde Unified School District at a regular meeting thereof, held on this ____ day of _____, 20__ by its Resolution No. _____.

Clerk of the Governing Board

(3) Filed this ____ day of _____ 20__, at the hour of ____ o'clock __m, in Book ____ of Maps of Assessment and Community Facilities Districts at pages ____ and as Instrument No. _____ in the office of the County Recorder of Riverside County, State of California

County Recorder of Riverside County
Peter Aldana

LEGEND

 Boundary of Community Facilities District No. 2025-1

nnn-nnn-nnn Assessor's Parcel Number

LEGAL DESCRIPTION

THE ASSESSOR'S PARCEL NUMBERS 316-230-001 THROUGH 316-230-067 BEING LOTS 1 THROUGH 64, INCLUSIVE, STREET LOTS A THROUGH C, G THROUGH L, INCLUSIVE, AND LETTERED LOTS D THROUGH F OF TRACT NO. 37725, IN THE CITY OF MORENO VALLEY, STATE OF CALIFORNIA, SUCH TENTATIVE TRACT MAP BEING APPROVED ON MARCH 23, 2023 BY THE COUNTY OF RIVERSIDE, STATE OF CALIFORNIA.

Prepared by:
Woolpert, Inc.