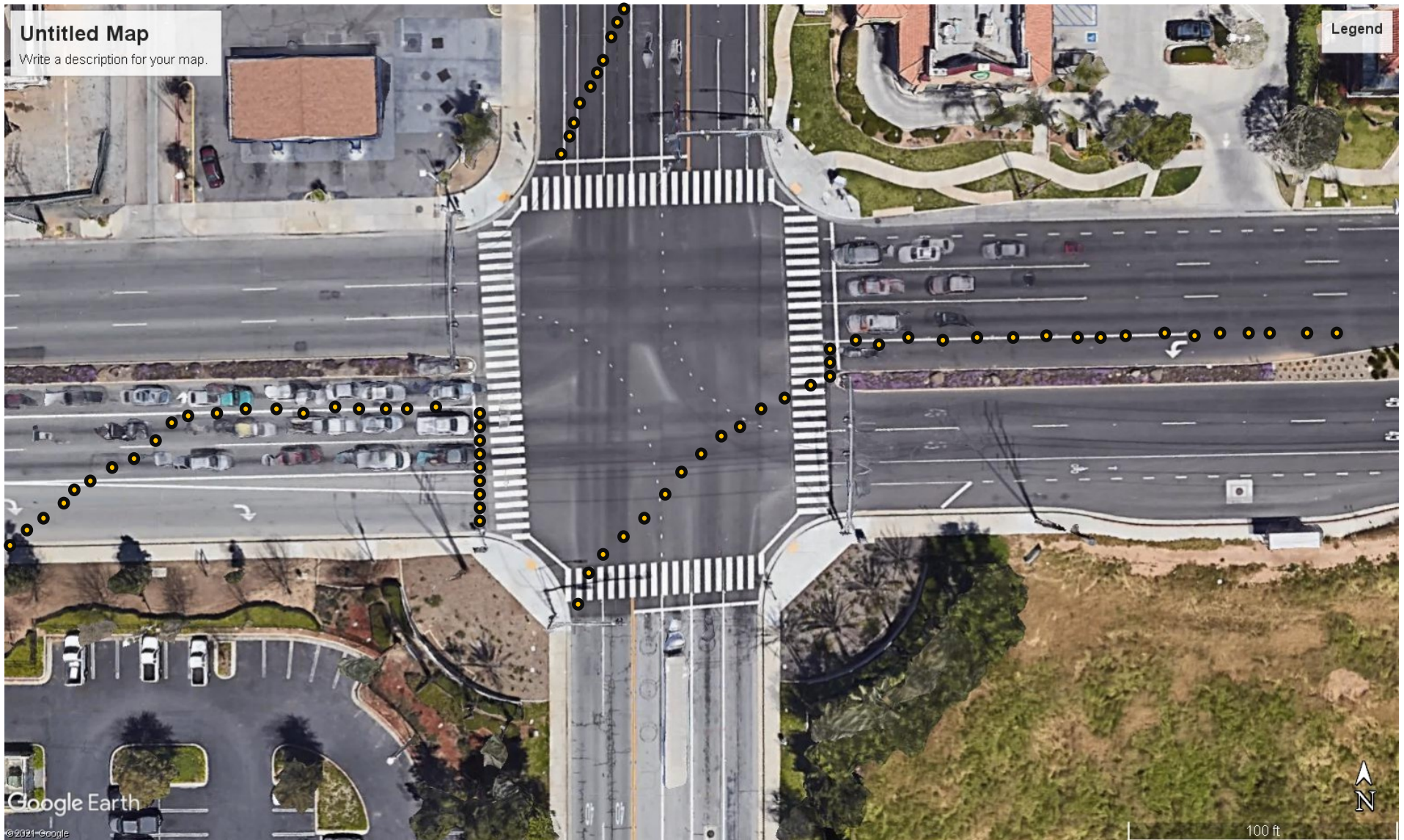


TCP #1 - ALESSANDRO & FREDERICK



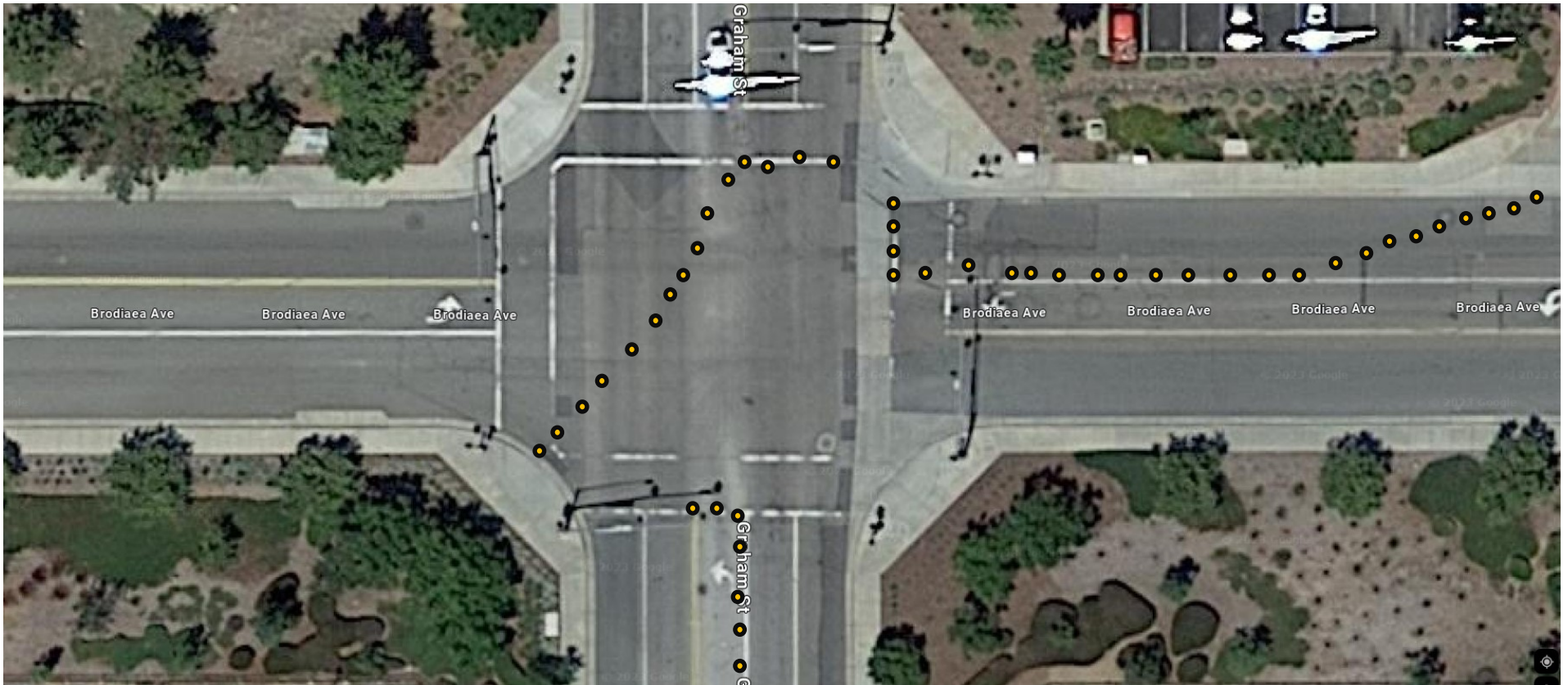
- 0630 hours, no traffic allowed eastbound on Alessandro Boulevard from Frederick Street and no traffic allowed southbound on Frederick Street from Alessandro Boulevard.
- Lights at the intersection will be switched to flash.

TCP #2 - ALESSANDRO & GRAHAM



- 0630 hours, No traffic southbound on Graham Street from Alessandro Boulevard.
- Lights at the intersection will be switched to flash.

TCP #3 - BRODIAEA & GRAHAM



- 0630 hours, no traffic allowed eastbound or westbound on Brodiaea Avenue from Frederick Street to Graham Street.
- Lights at the intersection will be switched to flash.

TCP #4 RESOURCE & FREDERICK



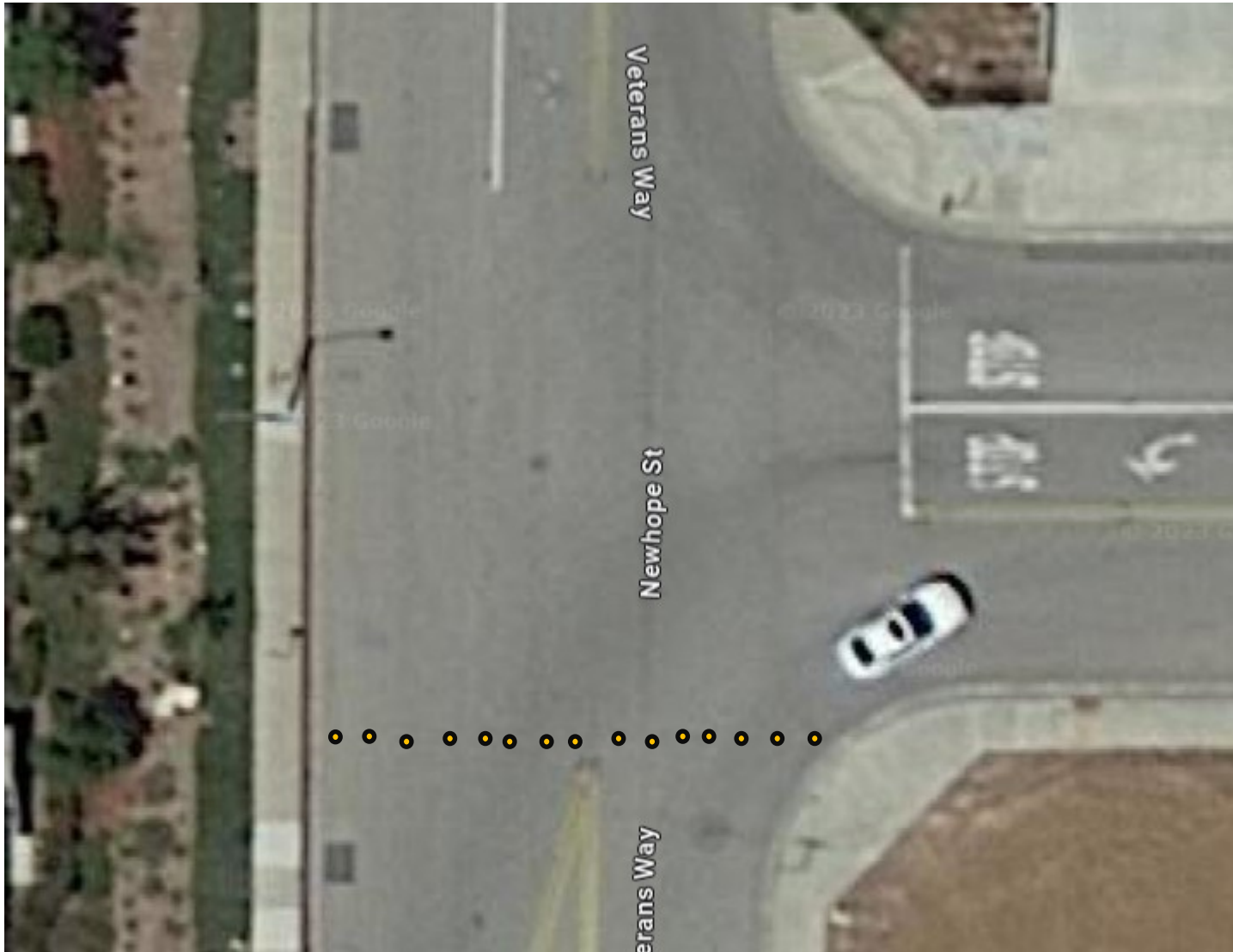
- 0630 hours, no northbound traffic allowed on Frederick Street, north of Resource Way.

TCP #5 CALLE SAN JUAN DE LOS & CORPORATE



- 0630 hours, no traffic allowed eastbound or westbound on Calle San Juan De Los Lagos from Corporate.
- Deputy manning this intersection will move cones and stop run/walkers to allow sheriff personnel ingress and egress to the station.

TCP #6 CALLE SAN JUAN DE LOS & VETERANS



- 0630 hours, no traffic southbound or northbound at intersection.

TCP #7 - VETERANS & NEWHOPE



- 0630 hours, No eastbound traffic pass the intersection.

TCP #8 - ALESSANDRO & VETERANS



- 0630 hours, no traffic allowed southbound or northbound on Veterans Way at the intersection.

Ingress and egress MVSS

